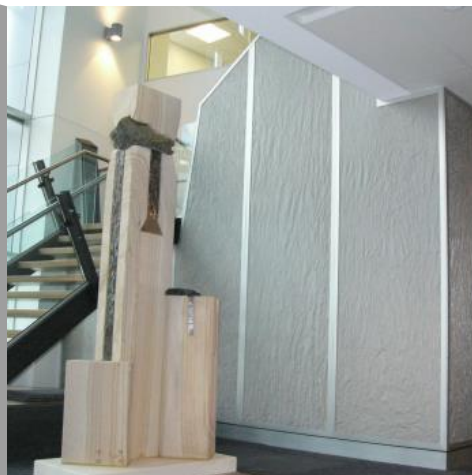


Fine 250



A **valmont**  COMPANY

Profile	Fine 250
Material	S/S T316
Finish	Mill
Max. Width	1220 mm
Max Length	30m
Open Area	37%
Weight	0.2 kg/m ²
Stock Status	Stock
Type	Flexible
Wire Dia	0.038mm
Aperture	0.05mm
Form	Roll



* Typical Architectural Installation

Applications:

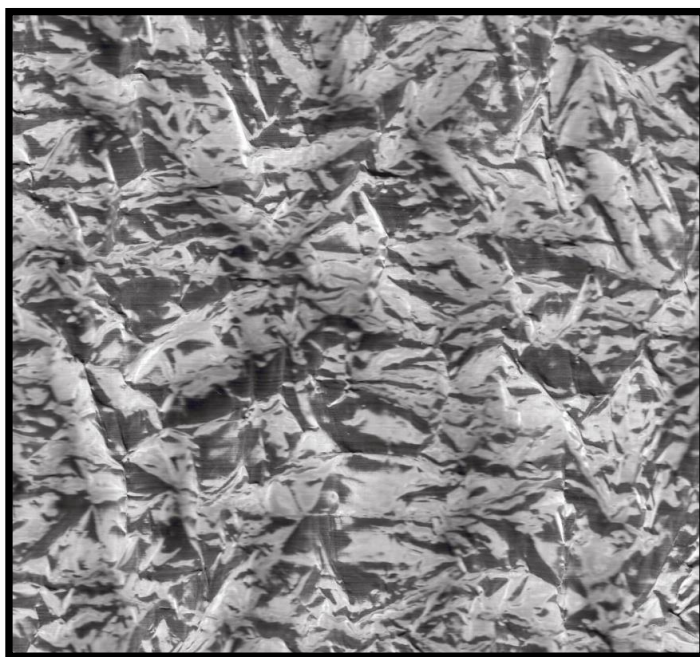
Infill Panels, Screens, Soft Furnishings

Attachment Methods:

Locker Group Fixing systems; including Angle, Cap, Flat Bar or Tensioned. See website for more details.

Extra Notes:

Fine 250 can be sewn with a traditional sewing machine. It retains its crinkled format no matter how its installed. Dimensions are nominal



1800 635 947 (Aus)
www.locker.com.au

0800 285 837 (NZ)
www.lockernz.co.nz

