

Rubber Tension Mats



A valmont COMPANY

RUBBER TENSION MATS - APERTURE SPECIFICATIONS

CIRCLE

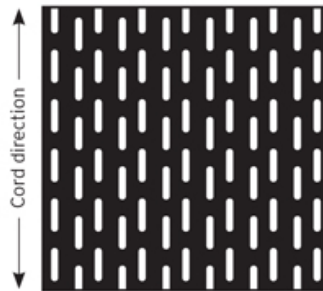
| APERTURE (mm) | CENTRES (mm) | OPEN AREA % |
|---------------|--------------|-------------|
| 7 | 11 | 37 |
| 8 | 13 | 35 |
| 9 | 14 | 38 |
| 10 | 15 | 41 |
| 12 | 18 | 41 |
| 15 | 23 | 39 |
| 18 | 28 | 38 |
| 20 | 31 | 38 |
| 23 | 35 | 40 |
| 25 | 37 | 42 |
| 30 | 42 | 47 |
| 35 | 47 | 51 |
| 40 | 55 | 49 |
| 45 | 60 | 52 |
| 50 | 65 | 55 |
| 55 | 70 | 57 |
| 60 | 80 | 52 |
| 65 | 90 | 48 |
| 70 | 100 | 45 |
| 75 | 105 | 47 |
| 80 | 110 | 49 |
| 90 | 125 | 48 |

APERTURE (mm) CENTRES (mm) OPEN AREA %

| | | |
|-----|-----|----|
| 100 | 135 | 51 |
| 110 | 145 | 53 |
| 120 | 160 | 52 |
| 130 | 170 | 54 |
| 140 | 180 | 56 |
| 150 | 200 | 52 |
| 170 | 220 | 55 |
| 200 | 250 | 59 |

SLOT

| APERTURE (mm) | CENTRES (mm) | OPEN AREA % |
|---------------|--------------|-------------|
| 3x25 | 8x30 | 30 |
| 4x25 | 9x30 | 36 |
| 5x25 | 10x30 | 40 |
| 6x25 | 12x31 | 38 |
| 7x25 | 13x31 | 41 |
| 8x25 | 15x32 | 39 |
| 9x25 | 16x32 | 41 |
| 10x25 | 17x34 | 42 |
| 12x25 | 21x34 | 38 |
| 14x25 | 23x34 | 36 |



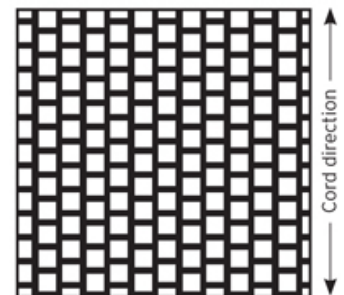
RUBBER TENSION MATS - APERTURE SPECIFICATIONS

SQUARE

| APERTURE (mm) | CENTRES (mm) | OPEN AREA % |
|---------------|--------------|-------------|
| 3 | 6 | 25 |
| 4 | 7 | 33 |
| 5 | 8 | 39 |
| 6 | 10 | 36 |
| 7 | 11 | 40 |
| 8 | 14 | 33 |
| 9 | 15 | 36 |
| 10 | 16 | 39 |
| 11 | 17 | 42 |
| 12 | 18 | 44 |
| 13 | 21 | 38 |
| 15 | 23 | 43 |
| 16 | 26 | 38 |
| 18 | 30 | 36 |
| 20 | 32 | 39 |
| 22 | 35 | 40 |
| 25 | 40 | 39 |
| 26 | 41 | 40 |
| 28 | 43 | 42 |
| 30 | 45 | 44 |
| 32 | 50 | 41 |
| 35 | 53 | 44 |
| 38 | 56 | 46 |
| 40 | 58 | 48 |
| 42 | 62 | 46 |
| 45 | 65 | 48 |
| 48 | 68 | 50 |
| 50 | 70 | 51 |
| 55 | 77 | 51 |
| 60 | 85 | 50 |
| 65 | 90 | 52 |
| 70 | 100 | 49 |

APERTURE (mm) CENTRES (mm) OPEN AREA %

| | | |
|-----|-----|----|
| 75 | 105 | 51 |
| 80 | 110 | 53 |
| 90 | 130 | 48 |
| 100 | 140 | 51 |
| 110 | 160 | 47 |
| 120 | 170 | 50 |
| 130 | 190 | 47 |
| 140 | 200 | 49 |
| 150 | 225 | 44 |
| 170 | 245 | 48 |
| 200 | 280 | 51 |



* For other non standard specifications, please contact your extractive screening solutions representative.

* High flow open area patterns available.

Standard Rubber Thicknesses

| Thickness | Square Hole Range (mm) |
|-----------|------------------------|
| 3 | 3-12 |
| 5 | 6-14 |
| 7 | 8-22 |
| 10 | 10-28 |
| 15 | 15-60 |
| 20 | 20-110 |
| 25 | 25-125 |
| 35 | 35-125 |

Hook Types (cord direction runs from Hook to Hook)

| Hook Type | Suitable for |
|---------------------------------------|------------------------|
| LD (Light Duty) | 3-10mm thickness |
| SD (Standard Duty) | 15-35mm thickness |
| SR (Standard Recessed) | 35mm, 70mm Apt & below |
| HR (Heavy Duty Recessed) | 35mm, 70mm Apt & above |
| ET (End Tensioned) | 3-35mm thickness |
| HD (Heavy Duty - non std hook) | 25 & 35mm thickness |

1800 635 947 (Aus)
www.locker.com.au

0800 285 837 (NZ)
www.lockernz.co.nz