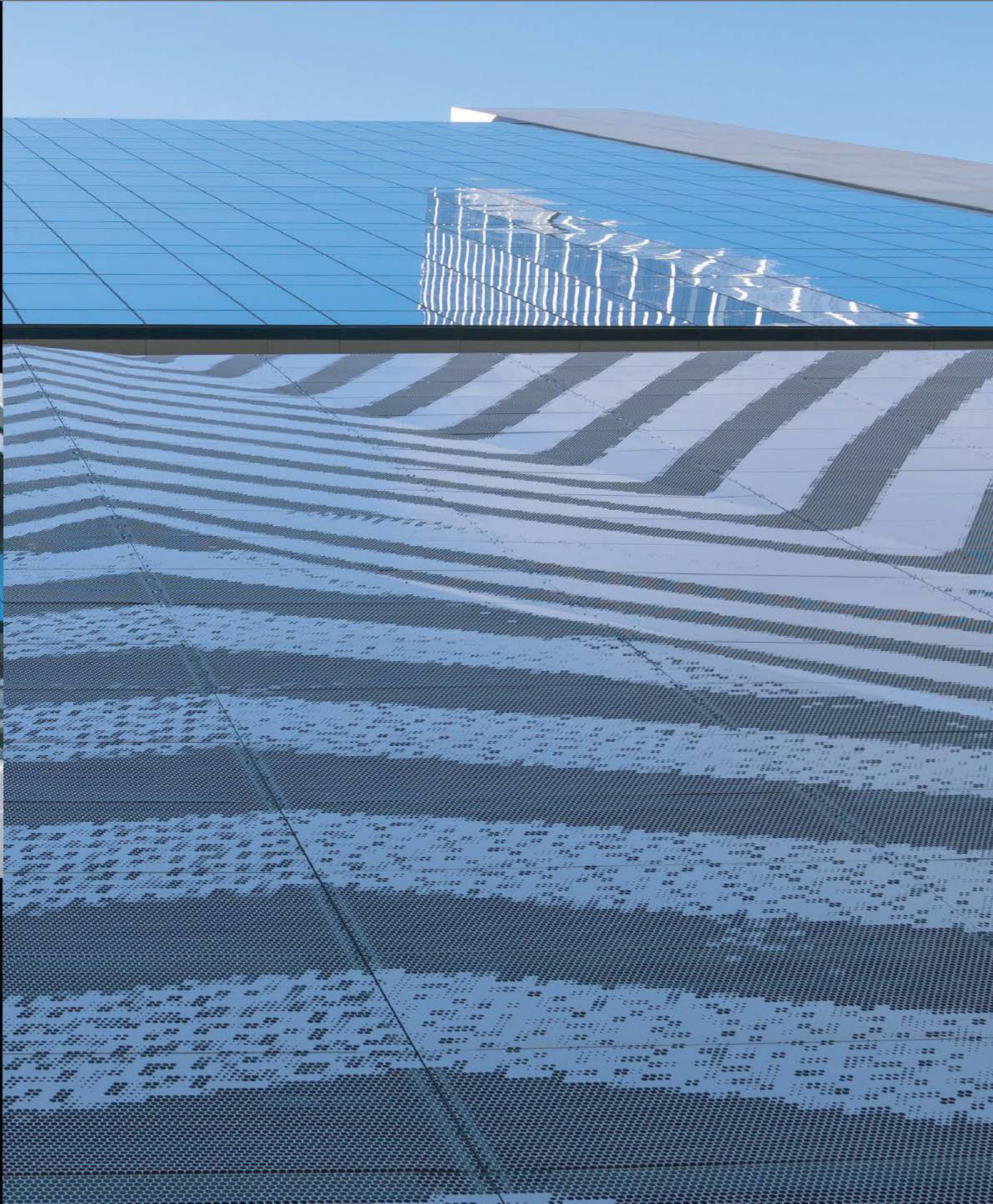


LOCKER

A valmont COMPANY

We set the standard

Pic Perf[®]



Pic Perf®

Stamp an indelible image on your next project.

Pic-Perf® is a unique technology allowing detailed images to be created in metal, for a variety of applications.

Pic-Perf® creates an image using hundreds or even thousands of holes, punched out of metal.

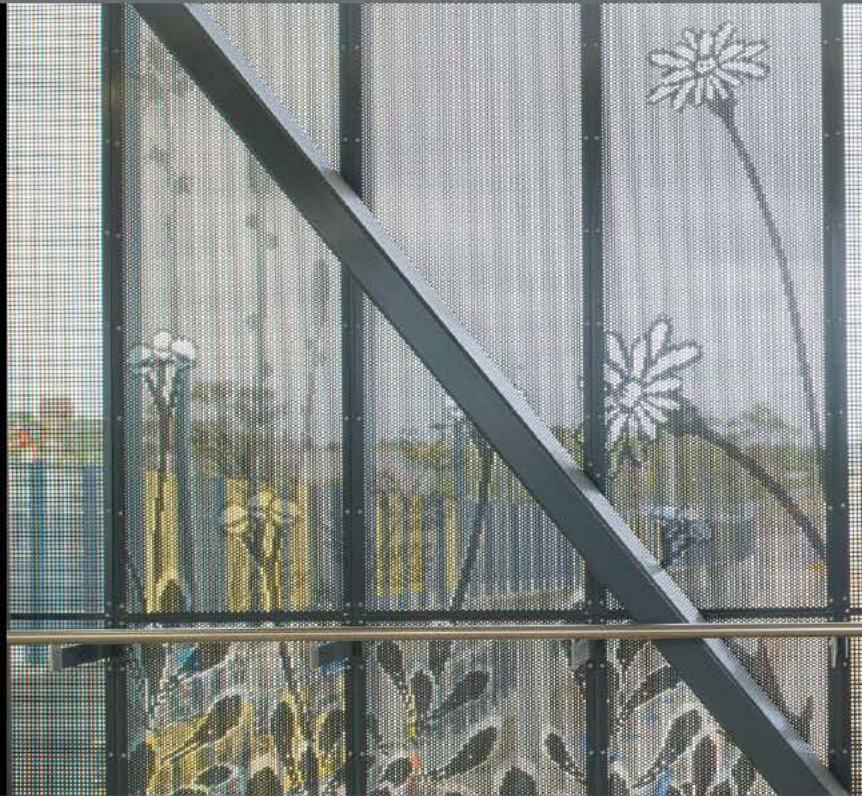
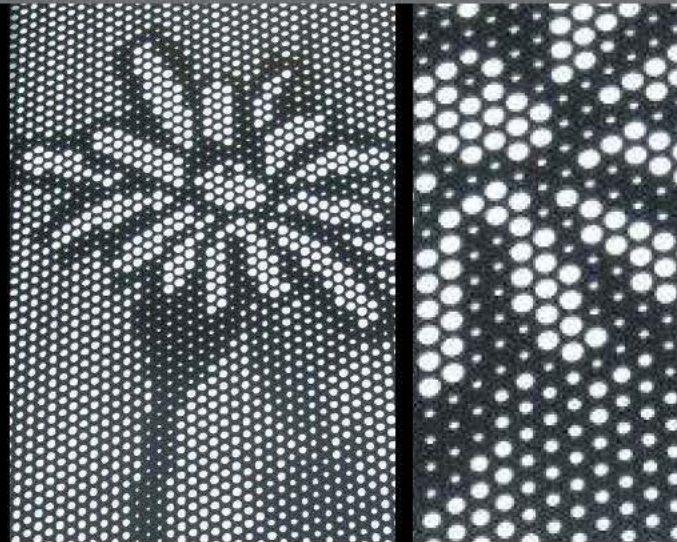


Image:

- Exceptional clarity is achievable in almost any size*
- Pic-Perf® can be an abstract artwork, logo or brand, a photograph and even a collage of images
- Pic-Perf® creates a statement without needing to use words, however they can be incorporated if required!
- Create an image that's effective and strong, yet subtle

Flexible:

- Pic -Perf® is custom designed for each application, therefore it's tailored to your requirements
- Pic Perf® can be detailed or abstract
- Created in different materials, Pic-Perf™ can be used in internal or external applications
- The image can be left untreated, anodised or powder-coated, depending on application requirements.
- Pic Perf® images are scaleable; small enough to frame or large enough to clad an entire building

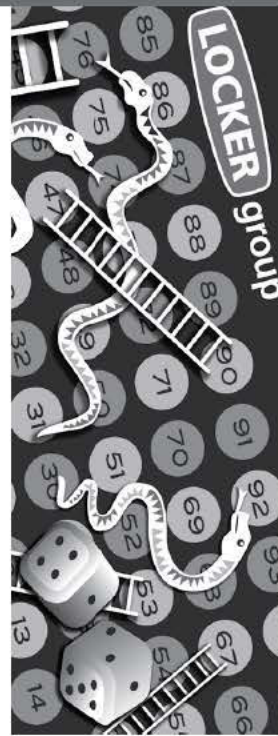


* Subject to original image.





A valmont COMPANY



ORIGINAL SAMPLE



PIC PERF® IMAGE

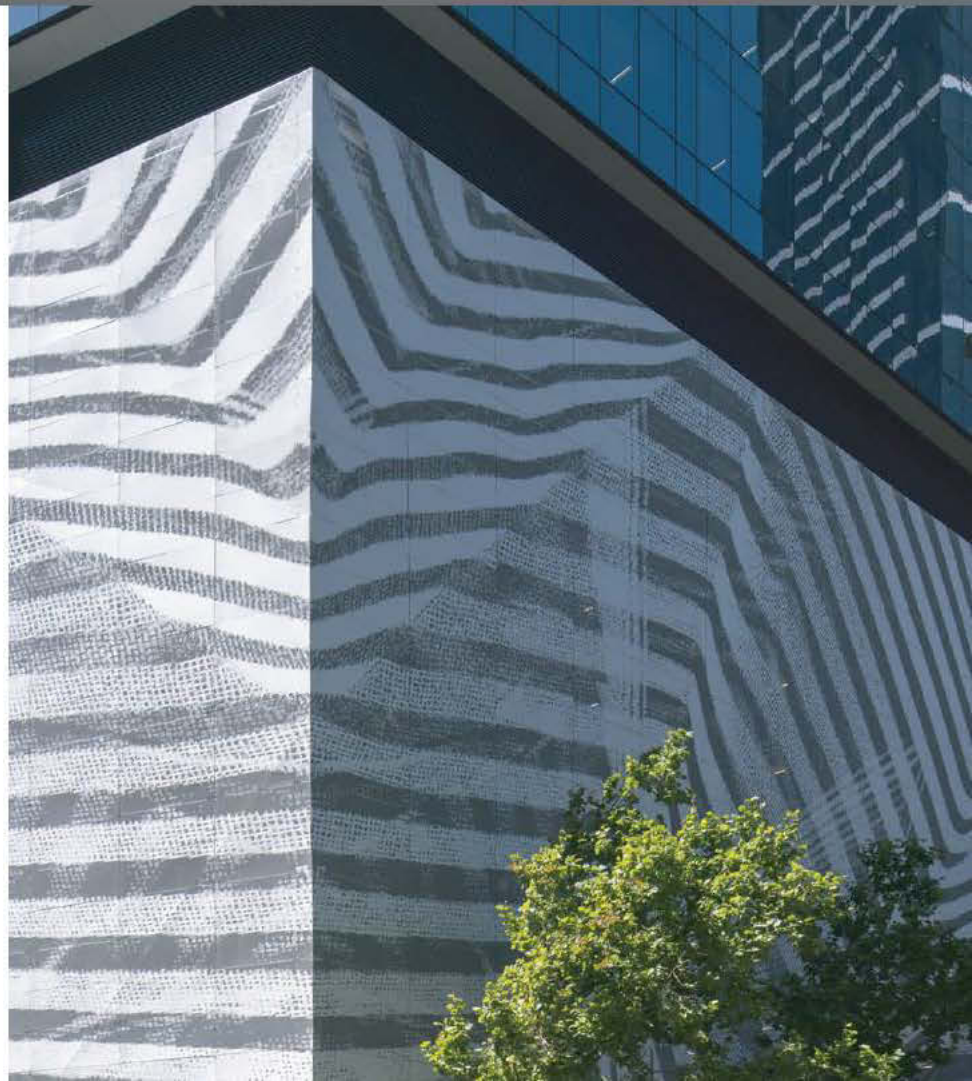
Functional:

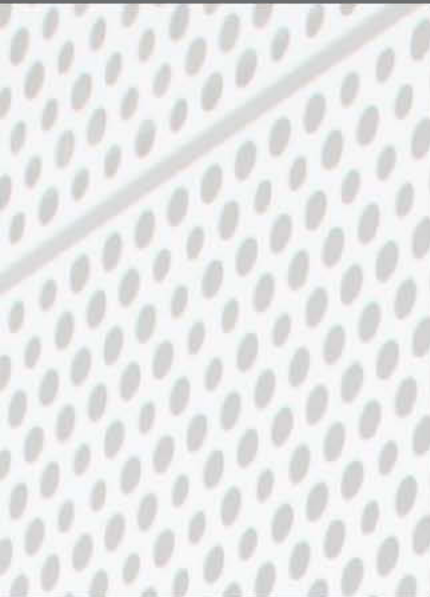
- Pic-Perf® can be used in a variety of applications including:
 - › car park screens
 - › balustrades
 - › sunscreens
 - › signage
 - › partitions or
 - › artwork/decoration
 - › ceilings
- Provides shade protection from the sun, reducing energy consumption
- Allows ventilation and airflow
- Provides security, allowing vision from inside to out
- Better wind resistance than traditional 'solid' signage
- Fixing holes can be incorporated into the design

Design:

- If you don't have an image or design in mind, Locker can create one for you

IMAGE IS CREATED USING
DIFFERENT SIZED HOLES





Important things to consider when specifying Pic-Perf®:

- The most common viewing distance - each image will have an ultimate viewing distance, where it is clearest
- The background affects the final appearance. (A darker background requires a light, reflective surface)
- The application environment will affect the material chosen.
- A digital image in appropriate formats* or Locker Group requires / can arrange graphic design to suit your requirements
- The size of the finished panel, ensuring the aspect ratio* is the same as the original image
- The appropriate fixing* methods



* Please refer to our Technical Data Sheets for further information.

