

# Rubber Tension Mats



A valmont COMPANY

## RUBBER TENSION MATS - APERTURE SPECIFICATIONS

### CIRCLE

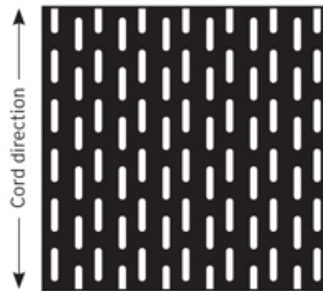
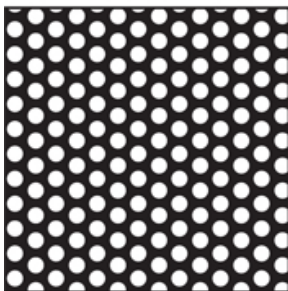
| APERTURE (mm) | CENTRES (mm) | OPEN AREA % |
|---------------|--------------|-------------|
| 7             | 11           | 37          |
| 8             | 13           | 35          |
| 9             | 14           | 38          |
| 10            | 15           | 41          |
| 12            | 18           | 41          |
| 15            | 23           | 39          |
| 18            | 28           | 38          |
| 20            | 31           | 38          |
| 23            | 35           | 40          |
| 25            | 37           | 42          |
| 30            | 42           | 47          |
| 35            | 47           | 51          |
| 40            | 55           | 49          |
| 45            | 60           | 52          |
| 50            | 65           | 55          |
| 55            | 70           | 57          |
| 60            | 80           | 52          |
| 65            | 90           | 48          |
| 70            | 100          | 45          |
| 75            | 105          | 47          |
| 80            | 110          | 49          |
| 90            | 125          | 48          |

### APERTURE (mm) CENTRES (mm) OPEN AREA %

|     |     |    |
|-----|-----|----|
| 100 | 135 | 51 |
| 110 | 145 | 53 |
| 120 | 160 | 52 |
| 130 | 170 | 54 |
| 140 | 180 | 56 |
| 150 | 200 | 52 |
| 170 | 220 | 55 |
| 200 | 250 | 59 |

### SLOT

| APERTURE (mm) | CENTRES (mm) | OPEN AREA % |
|---------------|--------------|-------------|
| 3x25          | 8x30         | 30          |
| 4x25          | 9x30         | 36          |
| 5x25          | 10x30        | 40          |
| 6x25          | 12x31        | 38          |
| 7x25          | 13x31        | 41          |
| 8x25          | 15x32        | 39          |
| 9x25          | 16x32        | 41          |
| 10x25         | 17x34        | 42          |
| 12x25         | 21x34        | 38          |
| 14x25         | 23x34        | 36          |



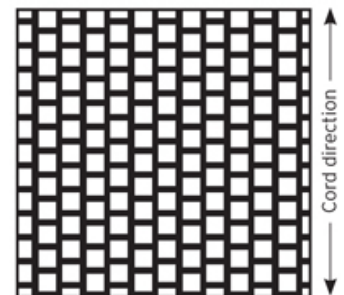
## RUBBER TENSION MATS - APERTURE SPECIFICATIONS

### SQUARE

| APERTURE (mm) | CENTRES (mm) | OPEN AREA % |
|---------------|--------------|-------------|
| 3             | 6            | 25          |
| 4             | 7            | 33          |
| 5             | 8            | 39          |
| 6             | 10           | 36          |
| 7             | 11           | 40          |
| 8             | 14           | 33          |
| 9             | 15           | 36          |
| 10            | 16           | 39          |
| 11            | 17           | 42          |
| 12            | 18           | 44          |
| 13            | 21           | 38          |
| 15            | 23           | 43          |
| 16            | 26           | 38          |
| 18            | 30           | 36          |
| 20            | 32           | 39          |
| 22            | 35           | 40          |
| 25            | 40           | 39          |
| 26            | 41           | 40          |
| 28            | 43           | 42          |
| 30            | 45           | 44          |
| 32            | 50           | 41          |
| 35            | 53           | 44          |
| 38            | 56           | 46          |
| 40            | 58           | 48          |
| 42            | 62           | 46          |
| 45            | 65           | 48          |
| 48            | 68           | 50          |
| 50            | 70           | 51          |
| 55            | 77           | 51          |
| 60            | 85           | 50          |
| 65            | 90           | 52          |
| 70            | 100          | 49          |

### APERTURE (mm) CENTRES (mm) OPEN AREA %

|     |     |    |
|-----|-----|----|
| 75  | 105 | 51 |
| 80  | 110 | 53 |
| 90  | 130 | 48 |
| 100 | 140 | 51 |
| 110 | 160 | 47 |
| 120 | 170 | 50 |
| 130 | 190 | 47 |
| 140 | 200 | 49 |
| 150 | 225 | 44 |
| 170 | 245 | 48 |
| 200 | 280 | 51 |



\* For other non standard specifications, please contact your extractive screening solutions representative.

\* High flow open area patterns available.

## Standard Rubber Thicknesses

| Thickness | Square Hole Range (mm) |
|-----------|------------------------|
| 3         | 3-12                   |
| 5         | 6-14                   |
| 7         | 8-22                   |
| 10        | 10-28                  |
| 15        | 15-60                  |
| 20        | 20-110                 |
| 25        | 25-125                 |
| 35        | 35-125                 |

## Hook Types (cord direction runs from Hook to Hook)

| Hook Type                             | Suitable for           |
|---------------------------------------|------------------------|
| <b>LD</b> (Light Duty)                | 3-10mm thickness       |
| <b>SD</b> (Standard Duty)             | 15-35mm thickness      |
| <b>SR</b> (Standard Recessed)         | 35mm, 70mm Apt & below |
| <b>HR</b> (Heavy Duty Recessed)       | 35mm, 70mm Apt & above |
| <b>ET</b> (End Tensioned)             | 3-35mm thickness       |
| <b>HD</b> (Heavy Duty - non std hook) | 25 & 35mm thickness    |

1800 635 947 (Aus)  
www.locker.com.au

0800 285 837 (NZ)  
www.lockernz.co.nz