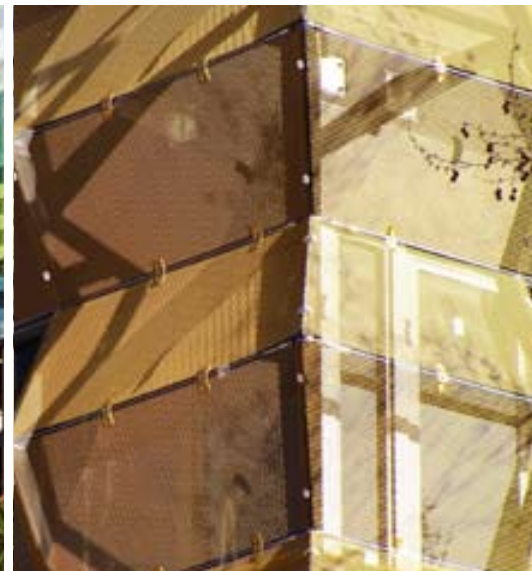


Lightweight facades

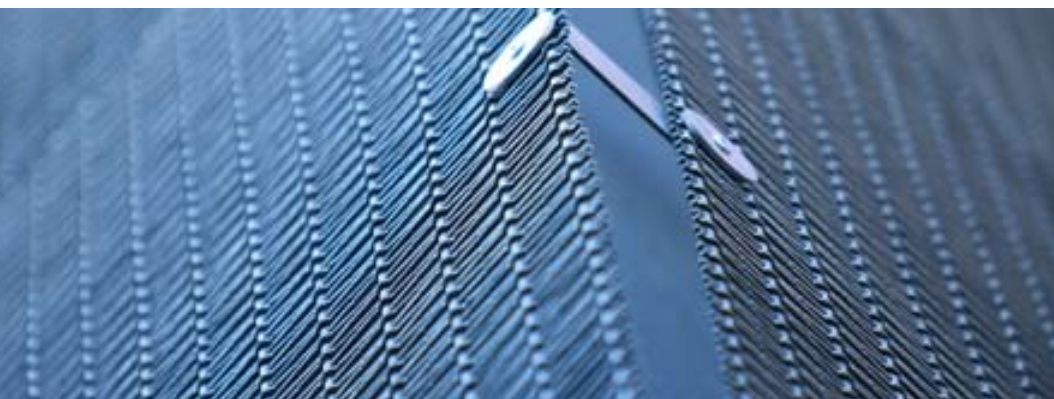
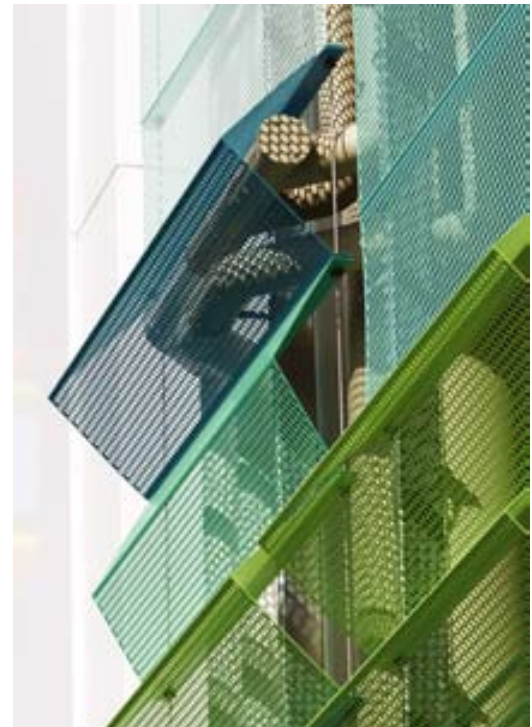


As the construction industry continues to face price pressures, products that offer an alternative solution at a lower cost bracket increase their appeal.

Locker Group recognises this pressure and has developed a range of solutions for light weight facade construction, utilising our existing range of materials; perforated and expanded metal, woven wire mesh and curtains, combined with stainless steel cable structures.

The unique combination offers several benefits;

- Visually minimalistic support structure
- Fast installation, when compared to traditional framing systems
- Cable installation and connectors are custom designed to the requirements of each project, providing ultimate flexibility
- The ability to highlight the feature you require; high open area, solar protection, protection against wind loads and so on
- Lightweight tensioned cables engineered to suit project specific load



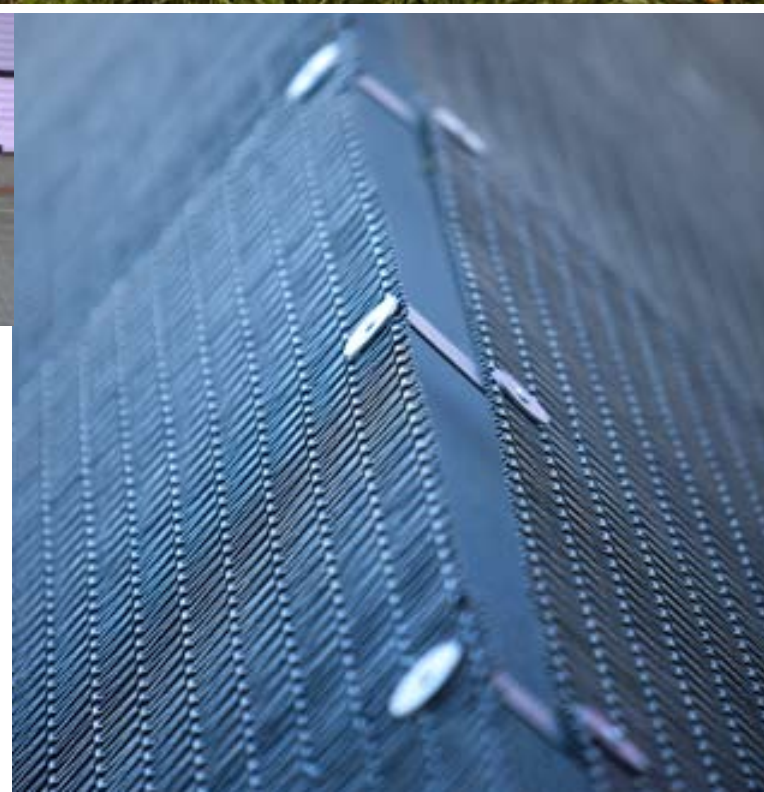
Lightweight facades

Locker Group's experience is varied;

Atmosphere® Park Beach Plaza

- Atmosphere perforated panels, in various profiles and colours
- Retail car park space in Coffs Harbour
- 900m² Installed in 9 days.
- Installed in 'stacks'
- Incorporated anti-climb components on specific levels.

Product: Atmosphere
Project: Park Beach Plaza
Architect: Reddog Architects
Builder: Edwards Construction
Photographer: Rob Cleary



North - South bypass tunnel

- Woven Wire mesh installed on cables on exhaust stacks for Brisbane tunnel system
- Unique clamping system developed
- Fast installation vs original quotation for alternative fixing

Product: Boston 311A
Project: North South Bypass Tunnel
Architect: EDAW
Photographer: Rob Burnett

Lightweight facades

103 Lonsdale St

- Horizontal cable installation, incorporating aluminium anodised woven wire.
- 3 dimensional design, to replicate a golden lantern on the outskirts of Melbourne in Chinatown precinct
- Light weight facade incorporates movable woven wire 'windows'

Product: Boston 743A
Project: 103 Lonsdale Street
Architect: SJB
Photographer: Rob Burnett



Agilent Technologies

- Installed on a new premises in the technology precinct of South East Melbourne
- Facade is designed to provide a textural, yet ethereal facade that floats from the face
- The expanded mesh profile, although industrial in appearance up close, appears light and open when installed on the facade
- Locker Group designed and manufactured specific clamps in order to secure the unusual shape of the expanded mesh to the tensioned cable system



Product: Expanded 125A
Project: Agilent Technologies
Architect: SKM
Builder: Wilkore
Photographer: Brent Robinson / Joe Berkelmans

LOCKER group

A valmont COMPANY

AUSTRALIA

1800 635 947
www.locker.com.au

NEW ZEALAND

0800 285 837
www.lockernz.co.nz

